

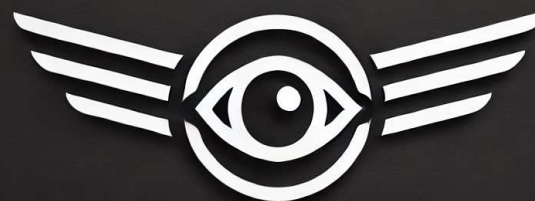


's-Hertogenbosch

Nico de Kruijter

European Lighting Expert
Outdoor

Eigenaar De Kruijter
Public Lighting

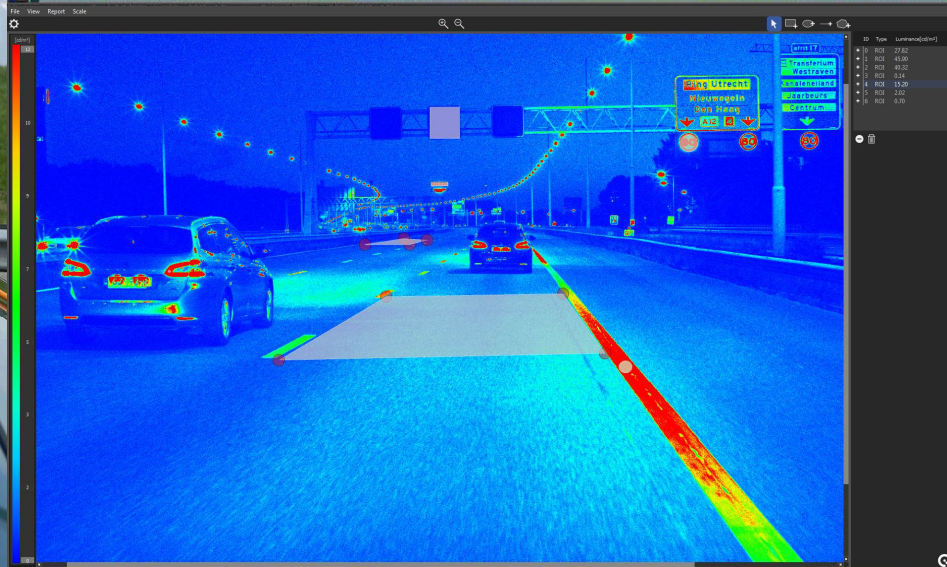
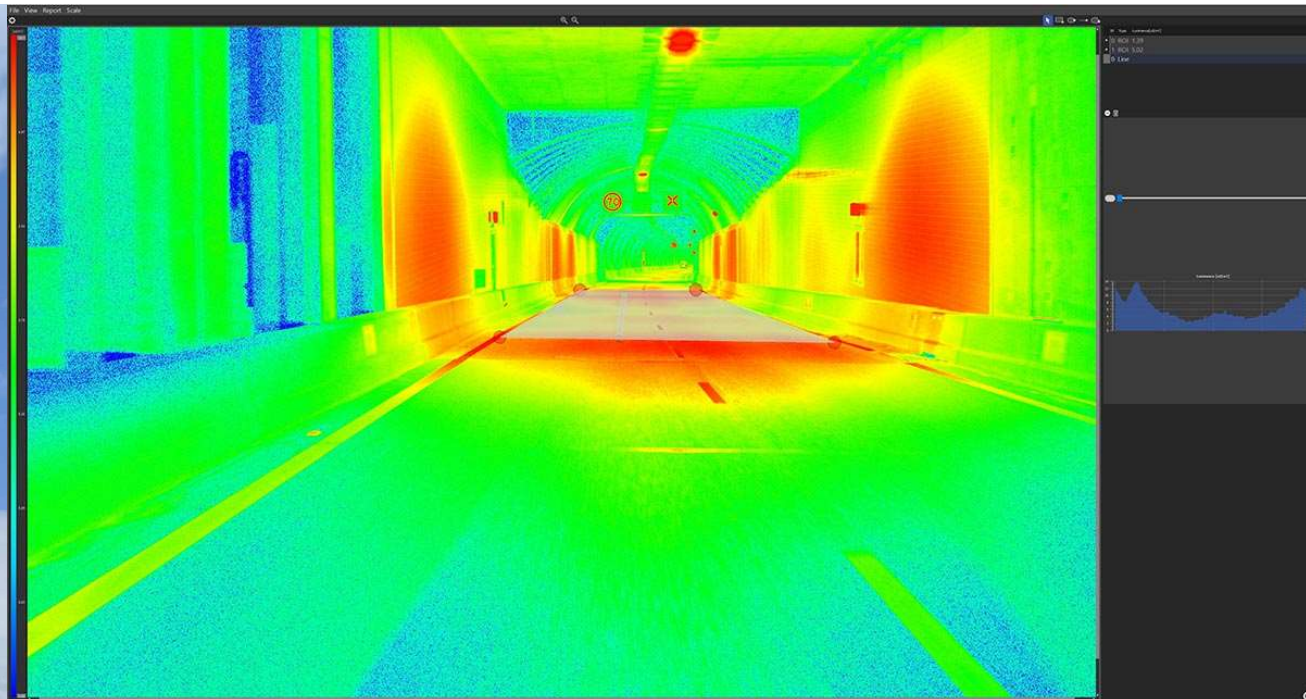


LUX-EYE
vliegende lichtmeting

Johny Schellings

Senior Specialist
Openbare verlichting

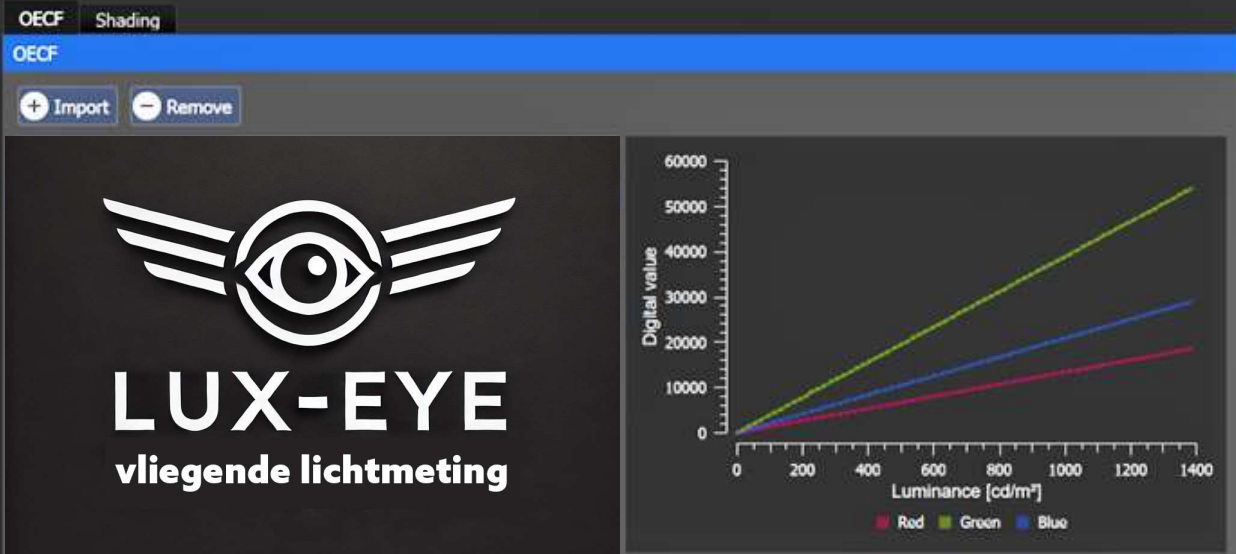
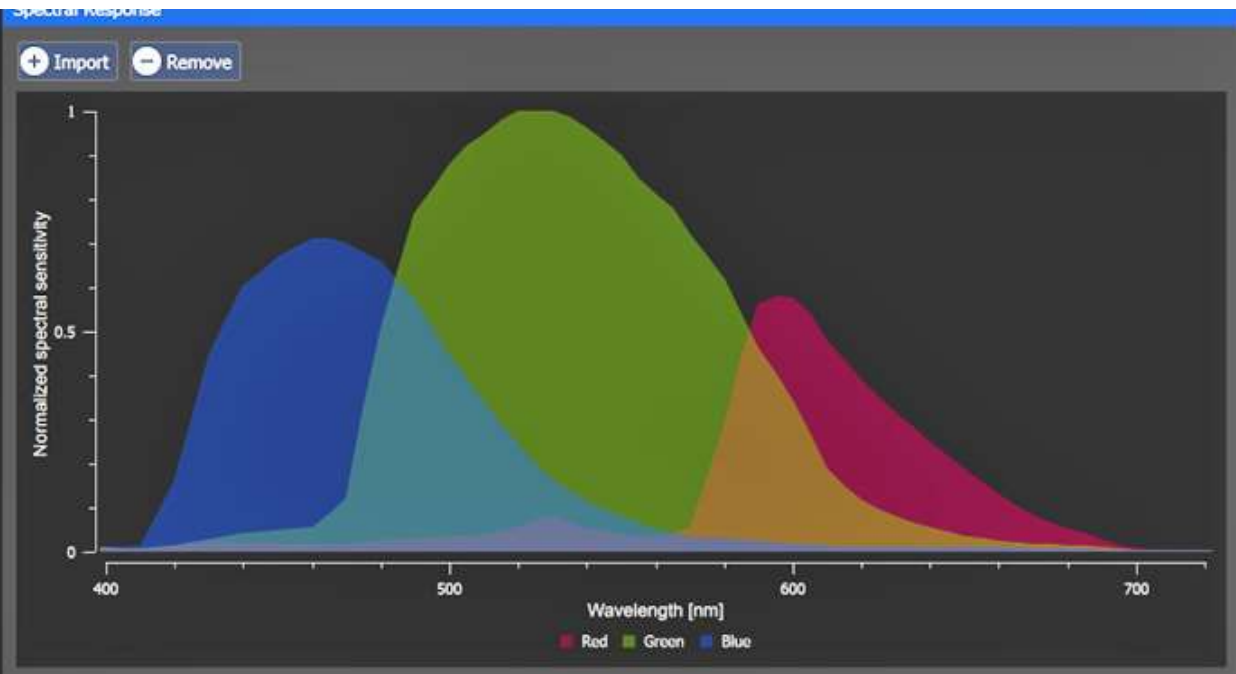
Gemeente
's-Hertogenbosch







4/3 CMOS Hasselblad Camera



Area Route

Area	Distance	Est. Duration	Photos
190922.7 m ²	4787 m	32 m 19 s	119

Reference takeoff point set [Reset Takeoff Point](#)

Select Lens

Visible

Photo Collection

Ortho Collection Oblique Collection

GSD

-1 -0.1 **5** cm/px +0.1 +1

Safe Takeoff Altitude

-100 -10 **20** m +10 +100

Altitude Mode

ASL **ALT** AGL

Relative to Takeoff Point **188.2** m

Global Flight Speed

- **2.5** m/s +

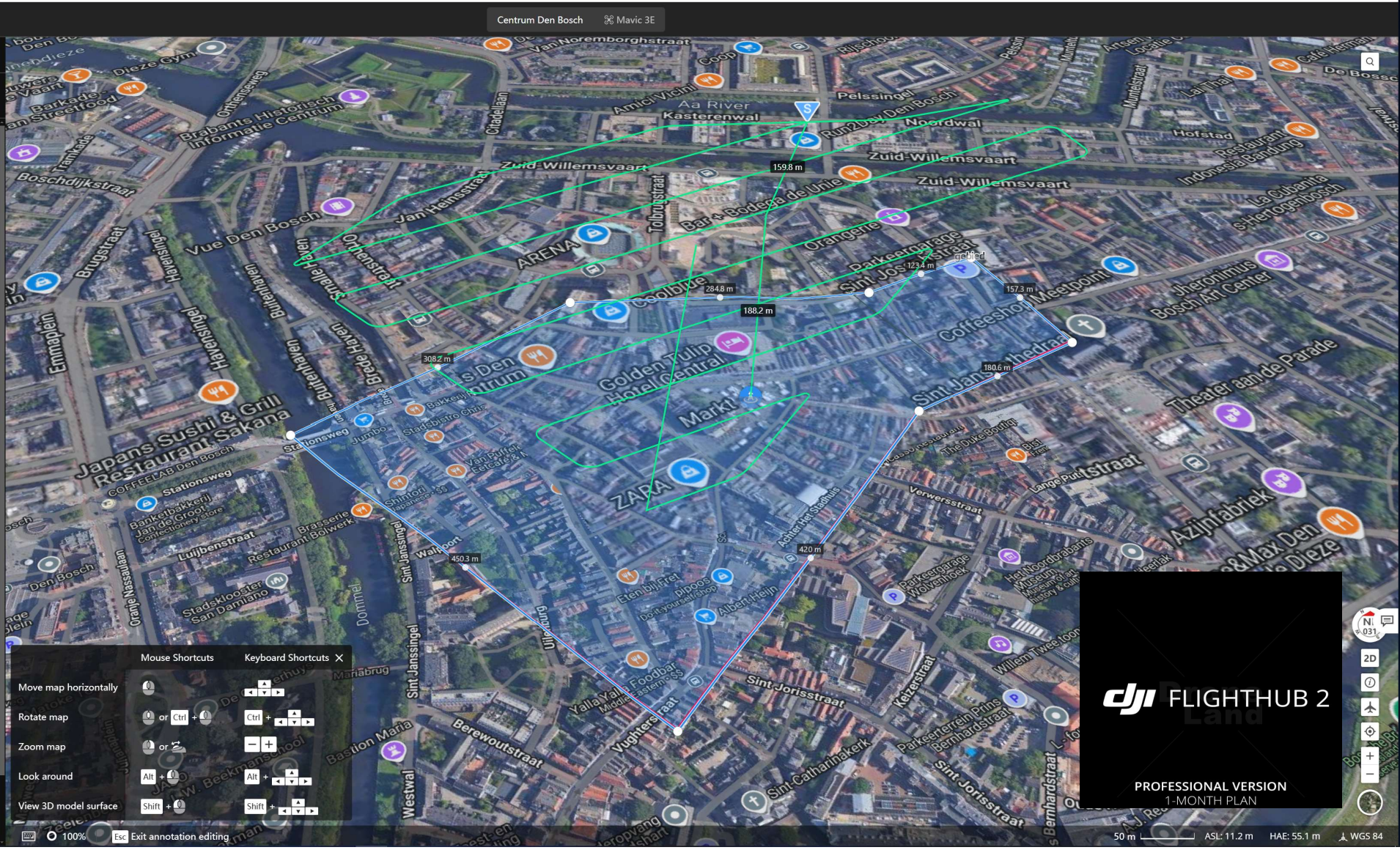
Course Angle

- **273** ° +

Elevation Optimization

Upon Completion

Return to Home



Mouse Shortcuts Keyboard Shortcuts X

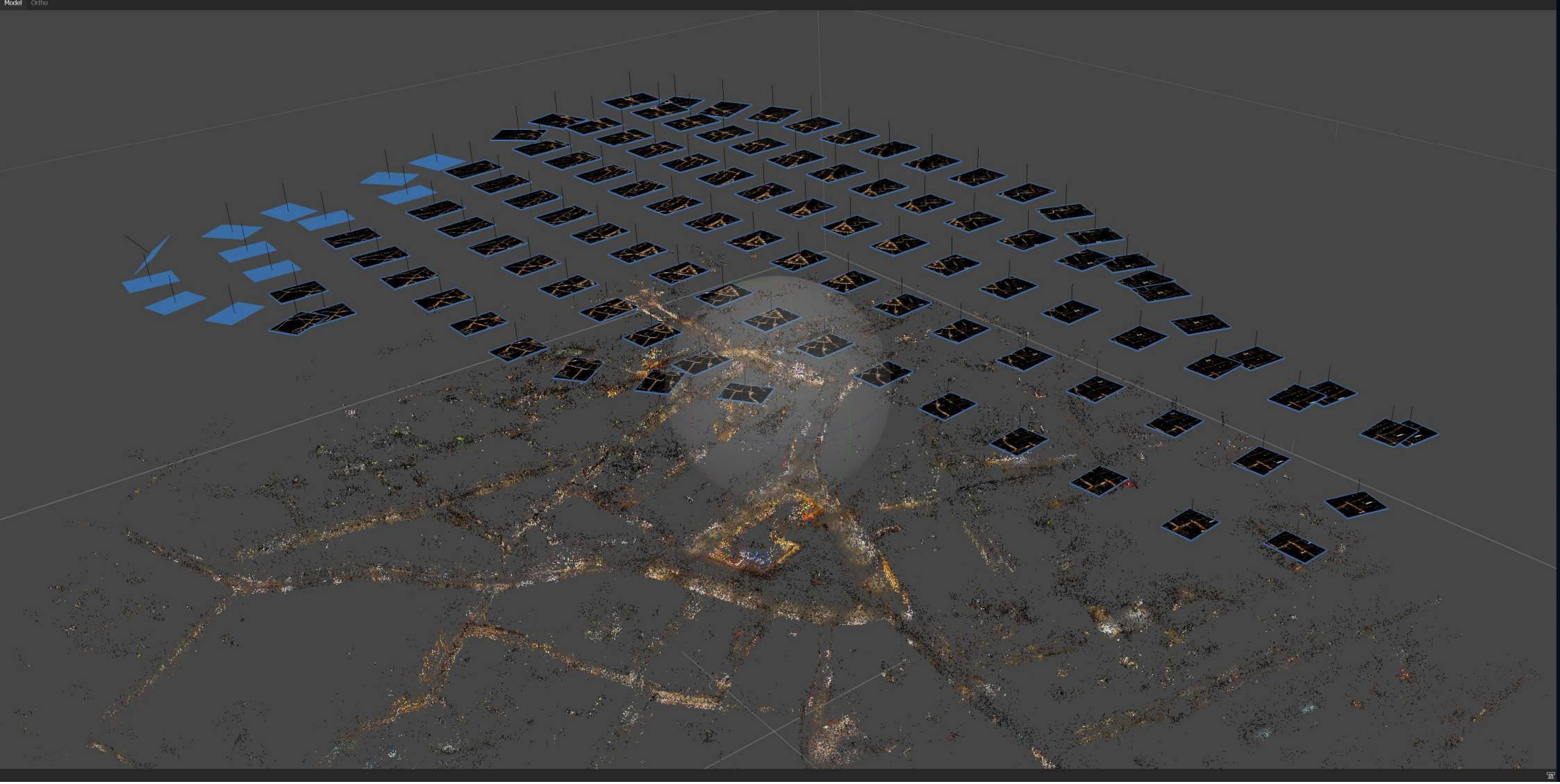
Move map horizontally		
Rotate map	or Ctrl +	Ctrl +
Zoom map	or	+ / - / + / -
Look around	Alt +	Alt +
View 3D model surface	Shift +	Shift +

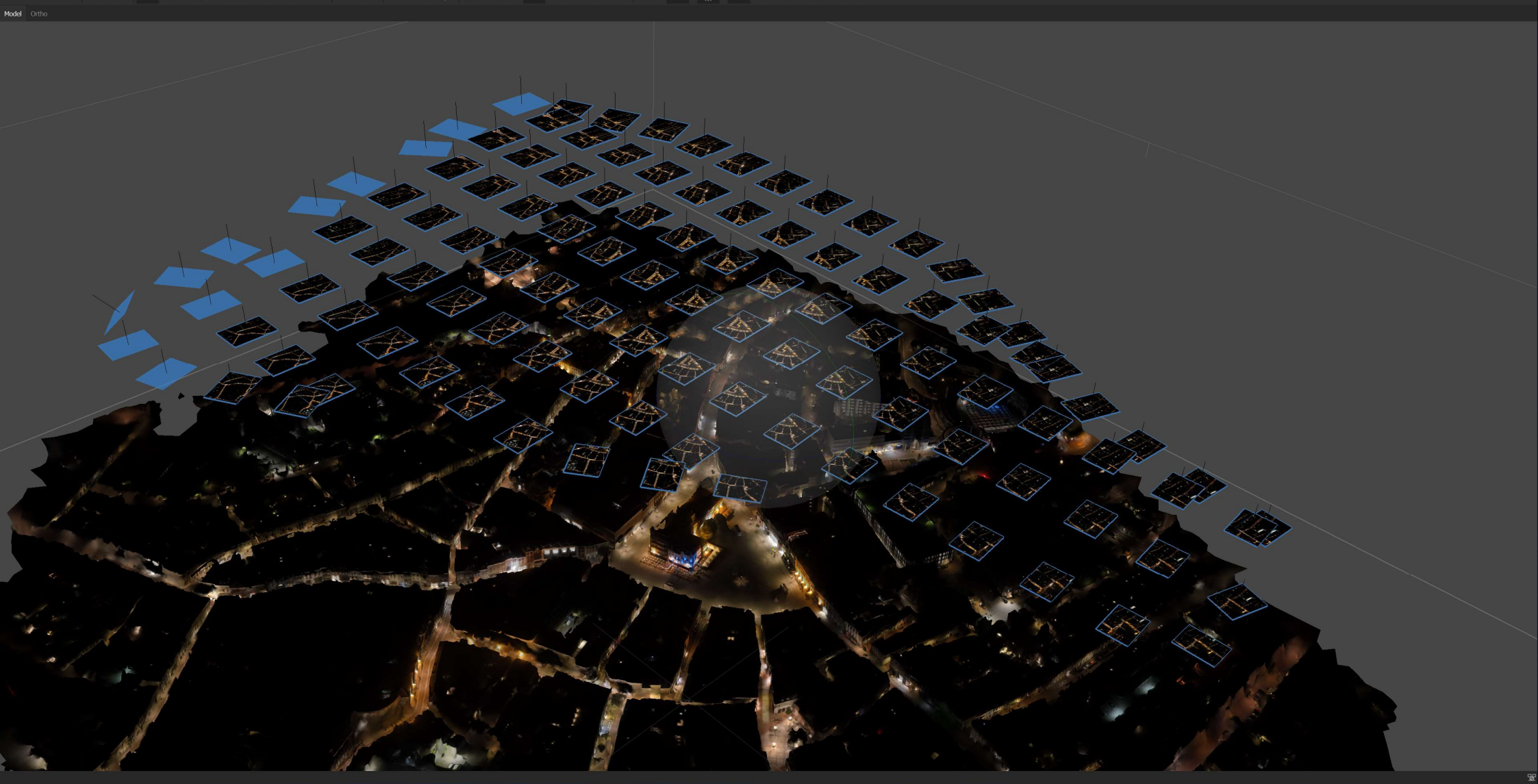
100% **Esc** Exit annotation editing

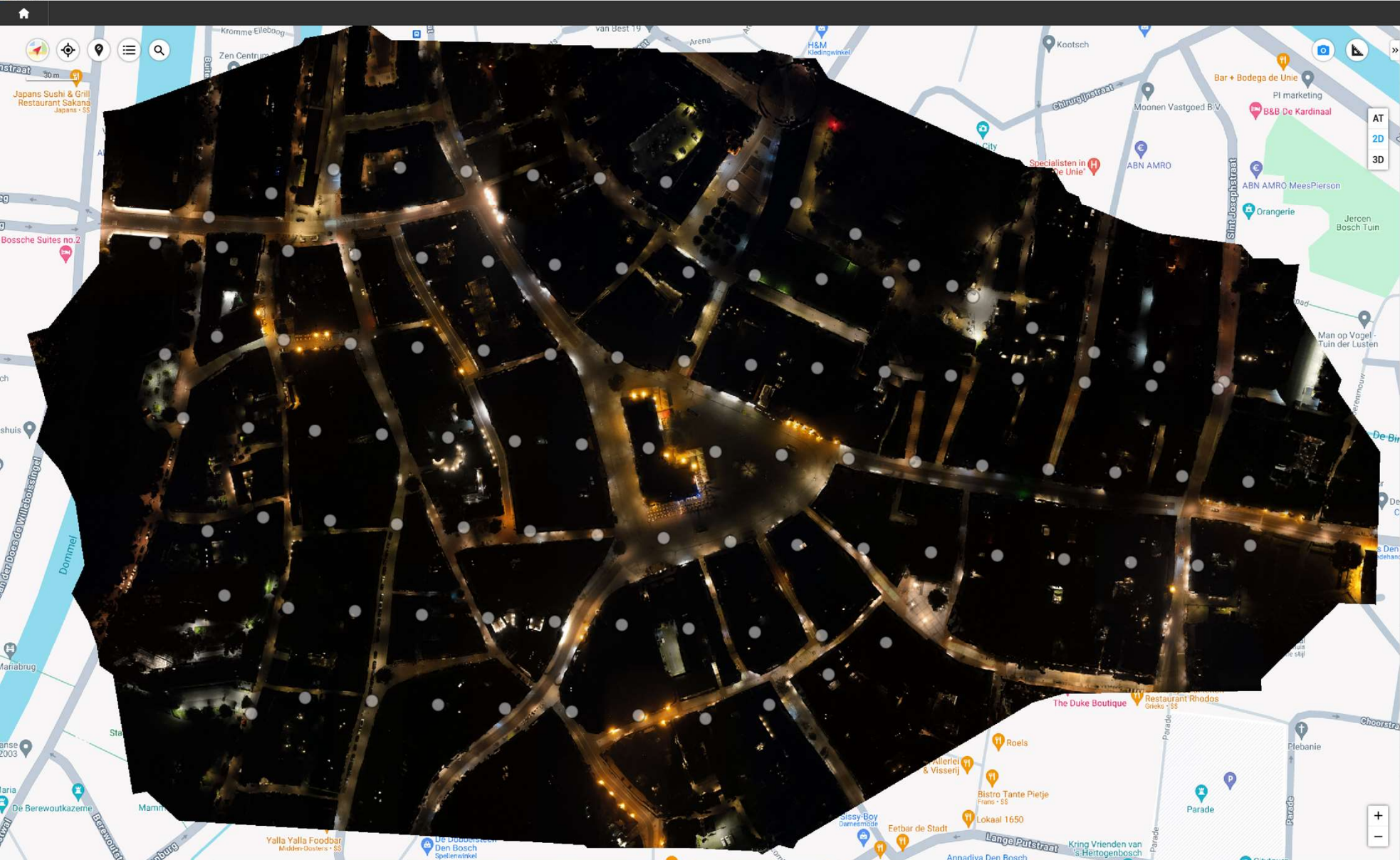
dji FLIGHTHUB 2

PROFESSIONAL VERSION
1-MONTH PLAN

50 m ASL: 11.2 m HAE: 55.1 m WGS 84







Reconstruction

New Visible Light Reconstruction...

Photos

102 Photos >

Image POS Data

Camera Info

Aerotriangulation

2D Map

Scene

Mapping Scenarios

Computation Method

Standalone Computation

Resolution

High

Advanced

Region of Interest >

Output Coordinate System

Arbitrary Coordinate System

Known Coordinate System

Horizontal Datum Settings

WGS 84 / UTM zone 31N

Geoid Settings

Default

Map Grid

Light Uniformity

Haze Reduction

3D Model

Work with DJI Modify

Applications

Annotation and Measurement >

Quality Report

Tip:

1.Reconstruction may take a while. Please wait

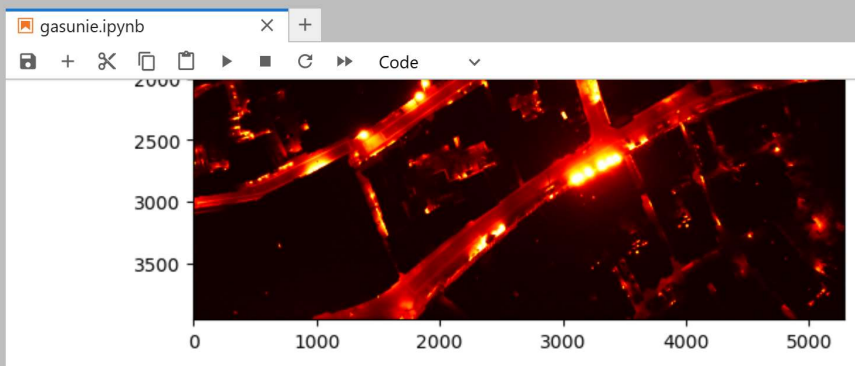
2.Do not alter or delete input data during

Start Reconstruction

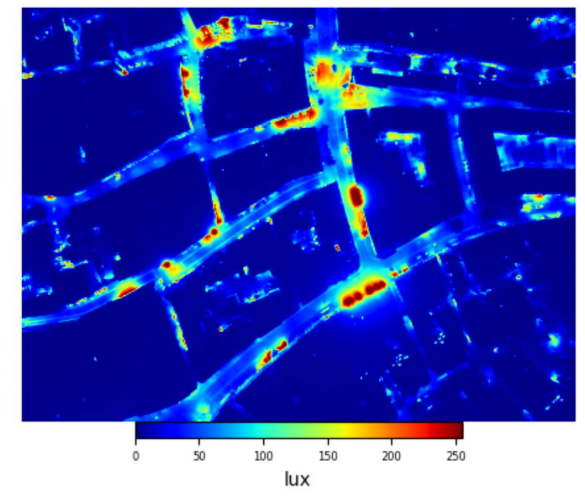
File Edit View Run Kernel Tabs Settings Help

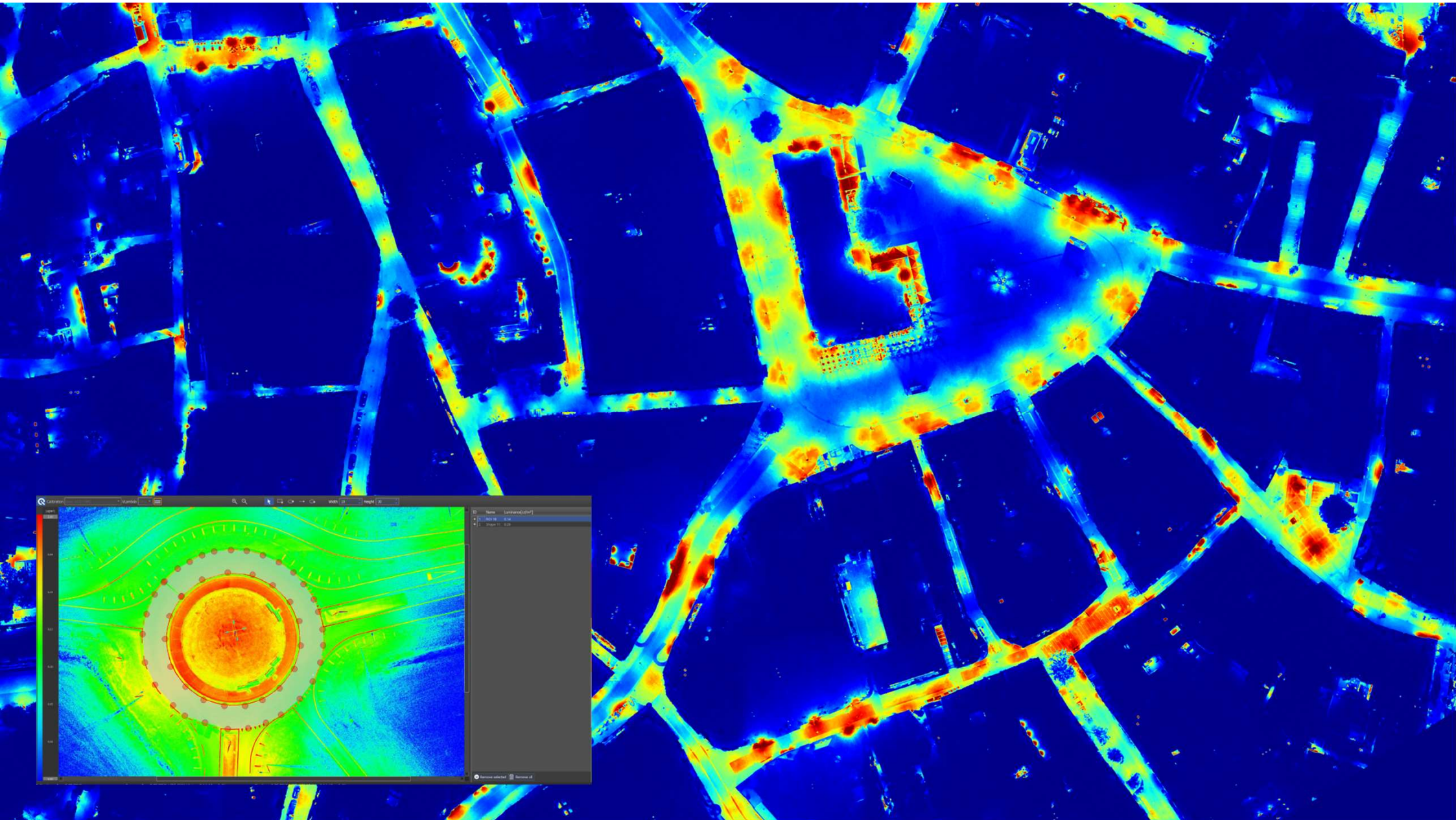
Filter files by name

Name	Last Modified
anaconda3	3 months ago
ansel	4 years ago
Autodesk	last year
Contacts	4 years ago
Creative ...	7 months ago
De Kruijte...	4 years ago
Desktop	35 minutes ago
Documents	last month
Downloads	3 days ago
download...	last year
Favorites	10 months ago
Links	4 years ago
Music	4 years ago
OneDrive	3 years ago
Pictures	last month
Saved Ga...	4 years ago
Searches	4 years ago
source	6 years ago
Untitled F...	last year
Videos	11 months ago
BullseyeC...	5 years ago
colorbar1...	8 months ago
colorbar2...	8 months ago
colorbar5...	8 months ago
dekruijter...	last year
foo.png	last year
gasunie.i...	28 minutes ago



```
[7]: imgplot = plt.imshow(lum_img)
imgplot.set_cmap('jet')
cbar=plt.colorbar(orientation='horizontal', shrink=0.5, label='lux', pad=0)
cbar.ax.tick_params(labelsize=6)
plt.axis('off')
plt.savefig('result-lux.png', dpi=2500)
```



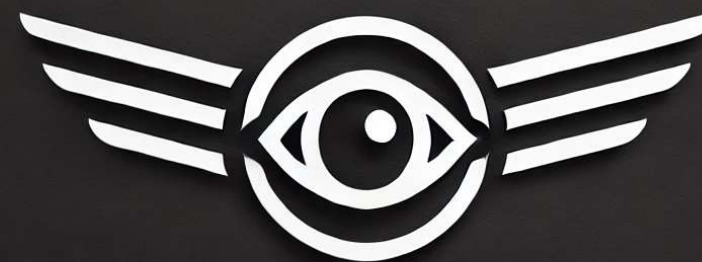




BAT
LIGHTM
—



SPEC EYE
LIGHTSPECTRUM
METINGEN
METINGEN



LUX-EYE
vliegende lichtmeting